





**PERDO**

# PERSIA

*www.persialift.com*

## Pulley order form

<b>Date :</b>	Pulley number	Name :	Company :			
<b>TEL :</b>						
1- Pulley Diameter : ..... 2- Rope Diameter : ..... 3- Grooves No : ..... 4- Lift system : <input type="checkbox"/> Traction <input type="checkbox"/> Gearless <input type="checkbox"/> Hydraulic  5- Shaft dimensions : Diameter : ..... Length : ..... 6- Bearing recommendation :		7- Motor model : ..... 8- Rated load (kg) : ..... 9-Comment :				
<b>Dimensions of grooves</b>						
		<b>C</b>	<b>D</b> Flange thickness	<b>F</b> groove pitch	<b>B</b>	<b>A</b> Groove



PERDO

# PERSIA

[www.persialift.com](http://www.persialift.com)

## Deflection Pulley with 400 mm diameter for traction system



Bearing recommendation						Deflection Pulley Ø 400 mm						
						D	C	B	A	Ø	model	NO
		6309 6209	6310 6210	6311 6211	6212	112	100	135	85	409	2040	1
						146	130				2040 -big flang	2
6208	6308	6209	6309	6210	6211	83	66	110	83	406	2050	3
						103					2050 -big flang	4
					6208	75	67	100	75	403	persia	5
6208	6308	6209	6309	6210	6211	113	117	116	86	405	3-arm	6
						145					3-arm -big flang	7
				6208	6209	75	66	100	75	406	2015	8
						81					66	100
6208	6308	6209	6309	6210	6211	105	88	120	85	409	2030	10
						123					2030 -big flang	11



PERDO

# PERSIA

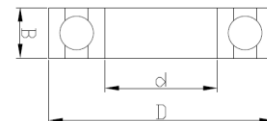
[www.persialift.com](http://www.persialift.com)

## Deflection Pulley for gearless system



Bearing recommendation				Deflection Pulley Gearless										
				D	C	B	A	Ø	model	NO				
6210	6309	6209	6208	110	110	120	75	265	Ø 260 mm	1				
		6012	6013	110	120				Ø 320 mm - 2018	2				
		6212	6213	150	140				Ø 320 mm - 2018 -big flang	3				
		6312	6313	170					Ø 320 mm - 2018 +big flang	4				
6010	6011			113					Ø 320 mm - 2016	5				
6210	6211			155					113	140	95	320	Ø 320 mm - 2016 -big flang	6
6310	6311			175									Ø 320 mm - 2016 +big flang	7

The diagram illustrates a pulley assembly with a central pulley and two side pulleys. The central pulley has a diameter labeled  $\varnothing$ . The distance between the centers of the two side pulleys is labeled  $B$ . The distance between the center of the central pulley and the center of one of the side pulleys is labeled  $A$ . The distance between the top and bottom of the central pulley is labeled  $C$ . The distance between the top and bottom of one of the side pulleys is labeled  $D$ . The pulleys are shown in cross-section with hatching.



d	Type 60			Type 62			Type 63		
	NO	D	B	NO	D	B	NO	D	B
40	6008	68	15	6208	80	18	6308	90	23
45	6009	75	16	6209	85	19	6309	100	25
50	6010	80	16	6210	90	20	6310	110	27
55	6011	90	18	6211	100	21	6311	120	29
60	6012	95	18	6212	110	22	6312	130	31
65	6013	100	18	6213	120	23	6313	140	33





PERDO

# PERSIA

[www.persialift.com](http://www.persialift.com)

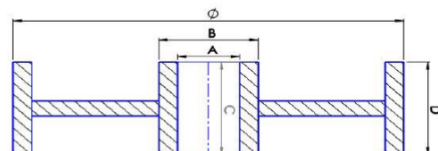
## Deflection Pulley for Hydraulic system



Solid pulleys with 2 to 4 ropes with spacer for a double wise rotation



Bearing recommendation							Hydraulic Deflection Pulley						
							D	C	B	A	Ø	model	
6308	6309	6210	6310	6211	6212	80	90	130	76	325	Ø 320 mm		1
						100					Ø 320 mm - big flang		2
6209	6309	6210	6310	6211	6212	80	70	130	75	365	Ø 360 mm		3
6308	6309	6210		6211	6212	99	93				Ø 360 mm - big flang		4
6209	6309	6210	6310	6211	6212	80	75	127	83	402	Ø 400 mm		5
	6309		6310	6211	6212	100	95				Ø 400 mm - big flang		6
		6208 2B	6308 2B	6209 2B	6210 2B	46	56	110	84	402	Ø 400 mm --2 groove		7
6309	6210	6310	6211	6212	6213	54	80	140	105	444	Ø 440 mm		8





PERDO

# PERSIA

[www.persialift.com](http://www.persialift.com)

## Deflection Pulley for *traction system*



Bearing recommendation					Deflection Pulley for traction system						
					D	C	B	A	Ø	model	Nº
6208	6308	6209	6309	6210	85	87	110	75	304	Ø 300 mm -5H	1
					123					Ø 300 mm -5H -big flang	2
	6208	6308	6209	6210	90	90	110	75	300	Ø 300 mm -3 arm	3
			6208	6209	105	93	103	75	328	Ø 320 mm -arm	4
	6208	6308	6209	6210	80	75	107	76	325	Ø 320 mm -5H	6
		6310	6211	6212	137	110	130	101	447	Ø440 mm old	7
6311	6212	6312	6213	6313	135	125	159	102	445	Ø440 mm new	8
					165					Ø440 mm new -big flang	9
					132	132	160	100	485	Ø480 mm	10
					152					Ø480 mm -big flang	11
					125	125	165	103	524	Ø520 mm	12
					152					Ø520 mm -big flang	13
					170					Ø520 mm +big flang	14

